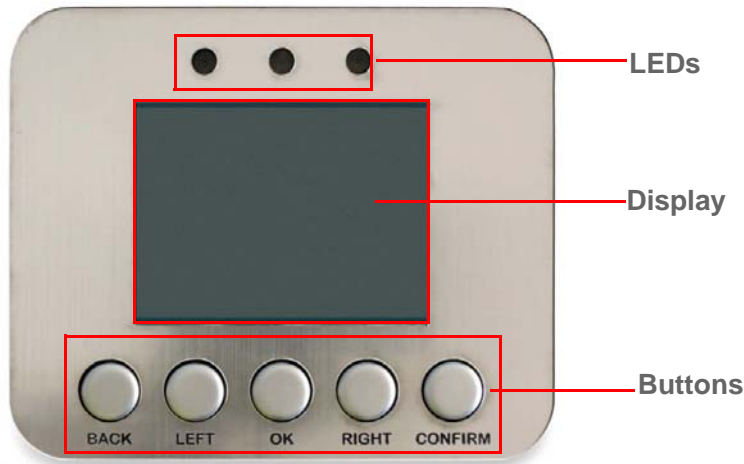


Introduction

eDisplay is a smartly designed and user-friendly energy monitor for your home. It communicates with the utility providers allowing you to have complete control over your bills!

eDisplay Device



- **Display:** 2.7"
- **LEDs:** Red, Blue and Green
- **Left/Right Buttons:** To change pages and change values in selected page
- **Confirm Button:** To confirm the settings in Settings Page and as a fast update button in HomePage
- **Ok Button:** To enter into the page and to select the value
- **Back Button:** To go back or cancel the selection

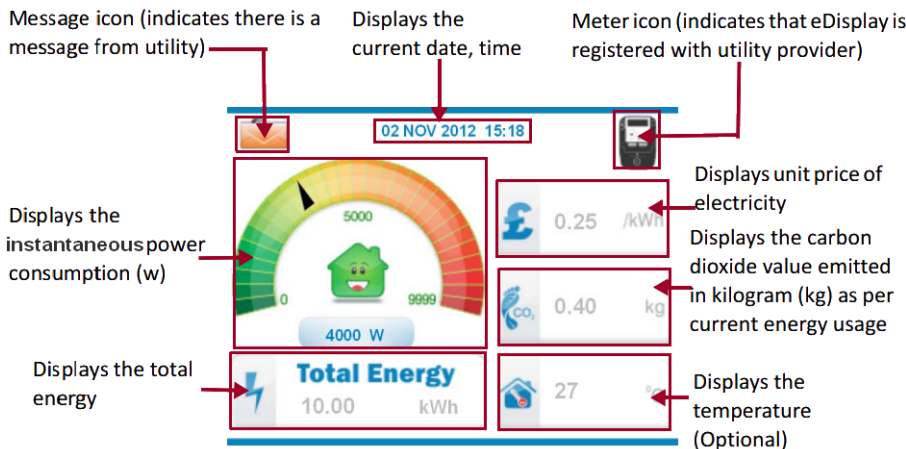
Special Features for Utilities

- Remote commissioning of eDisplay
- One to one pairing with Meter
- Ability to display the messages and price
- Ability to display the instantaneous power usage

Features Overview

- Displays energy and cost in real time
- Monitor current power
- Displays alerts
 - From utility
 - Based on energy targets

eDisplay User Interface



eDisplay displays following different pages:

- **Homepage** - The default power and energy display page
- **Message Page** - Displays messages received from utility meter
- **Price Page** – Displays price received from utility meter
- **Settings Page** - Display the settings to set the price
- **Info Page** – Displays system information of eDisplay and NES meter if registered

For more detailed information visit <http://energy.slscorp.com> or send us an email to energy@slscorp.com